

# THE GRISWOLD

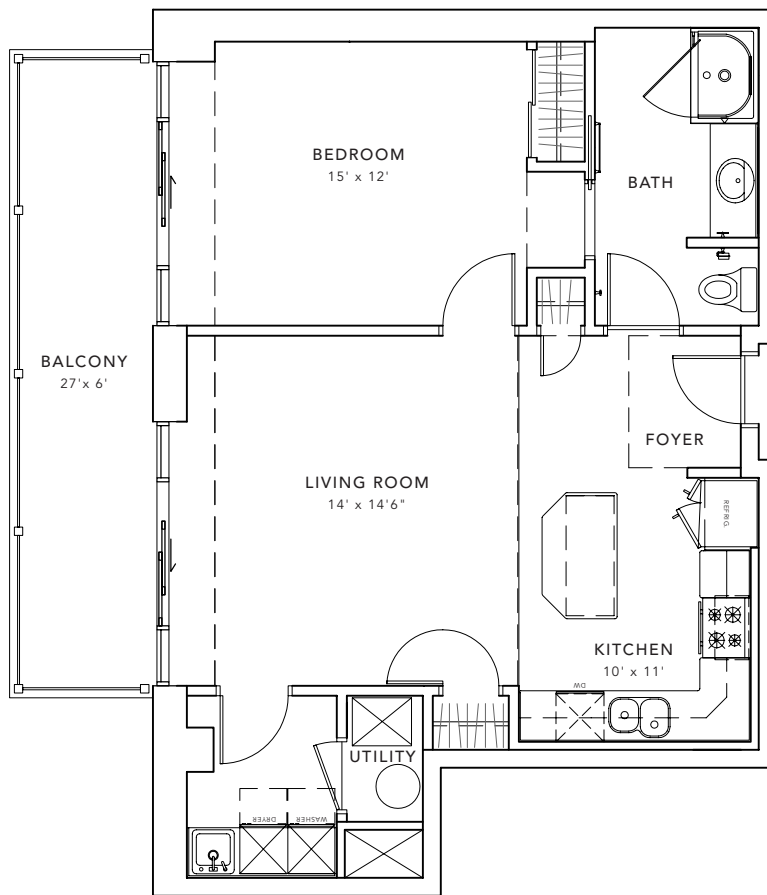
CAPITOL PARK

THE SHELBY

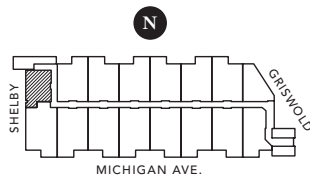
1 BED / 1 BATH

803 SQ. FT.

10' HIGH CEILINGS • PRIVATE TERRACE • CITY VIEW



ALSO FEATURING:  
FLOOR TO CEILING WINDOWS  
AVAILABLE FIREPLACES



ESQUIRE  
PROPERTIES  
define your image

For more information:  
313-580-2200  
[www.thegriswold.com](http://www.thegriswold.com)

The Roxbury Group